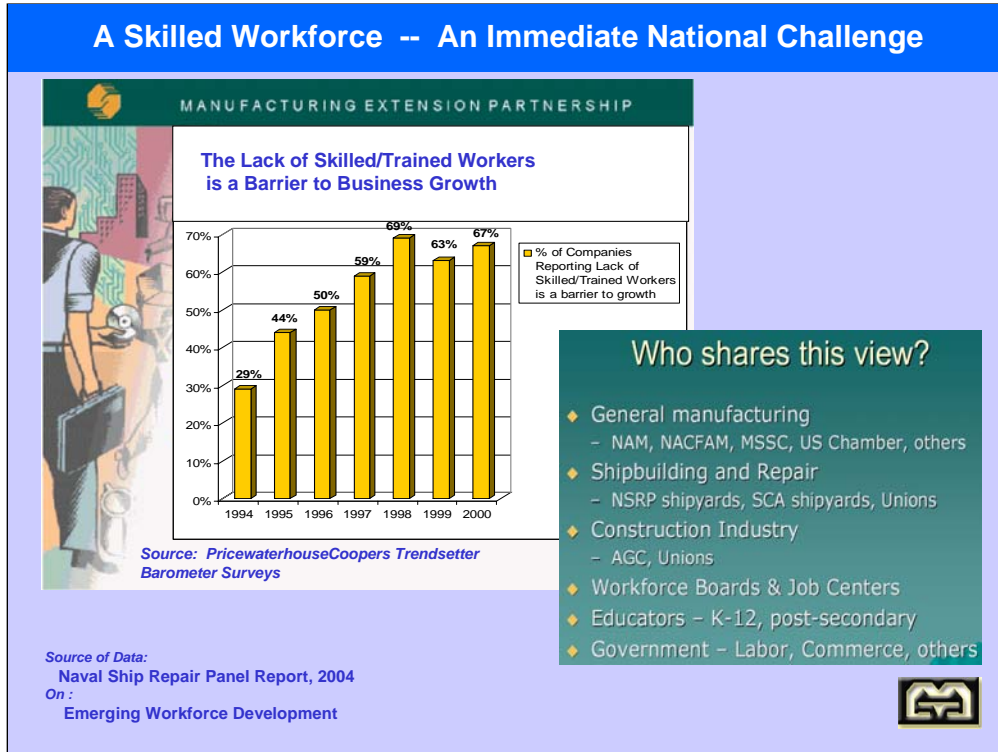


A Skilled Workforce -- An Immediate National Challenge



A PricewaterhouseCoopers assessment has found that two thirds of industry today have reported that the lack of a trained workforce is a barrier to their growth. Compounding the problem is the fact that in some industry, particularly shipbuilding, the workforce has not experienced a steady influx of young employees. This has resulted in a bubble of older employees that are now approaching retirement age. Within the next five to ten years this bubble of workers will be retiring and cause a serious shortage of replacement workers.

A trained workforce is the key to application of advanced fabrication technology such as that being developed at MAGLEV, Inc. Applying advanced technology methods for 21st century manufacturing will require that the workforce be thoroughly familiar with computer integrated manufacturing, robotic operations, precision processing methods and the impact of process operations on quality of the end product. Unfortunately, facilities for offering this type of advanced training are not readily available.

Recognizing this problem for its own future work activity and also how that need will impact other similar industry caused MAGLEV, Inc. to develop a partnership with the Pennsylvania Community Colleges to develop an Associate Degree program in Advanced Fabrication Technology. A curriculum has been developed and a sharing of facilities has been established. MAGLEV, Inc. will use its own facilities as a "teaching factory." Advanced fabrication training is underway with the first class starting with the next semester classes. Development of a modified curriculum for incumbent workers and displaced workers is now underway. The process with Pennsylvania State University to expand this curriculum to a four-year degree program is also underway.